

- NOTES:**
- 1) Workmanship to comply with Standard Specification of materials and methods to be used - SABS 0400
 - 2) Light Switch in Disabled toilet to be at 1200mm above FFL
 - 3) If Step over 900mm Build in Balustrade
 - 4) Gully positions to be determined as per site prescribed overall drainage design
 - 5) 2 x coats sealant on all exposed trusses (sand off all SABS & other markings)
 - 6) 50mm mineral wool insulation to be installed where there are ceilings. Bubble plastic insulation with foil backing to be installed with wire supports in all areas that do not have ceilings
 - 7) West Facing Facades to have standardised aluminium louvers from below eaves to drop of 1200mm
 - 8) Trusses to be designed in accordance with SABS0400 & approved by Project Engineers

2018/04/11	A	ISSUED FOR INFORMATION
2018/05/02	B	DRAWINGS UPDATED

DATE	REV. No.	DESCRIPTION
REVISIONS		
SIZE ON ORIGINAL DRAWING 100 mm		



FETAKGOMO-GREATER TUBATSE LOCAL MUNICIPALITY
 PO BOX 206
 Burgersfort
 1150
 Tel: (013) 265 8600 Fax: (013) 265 1975

FETAKGOMO TUBATSE MUNICIPALITY

PRAKTISEER COMMUNITY LIBRARY

CONTRACT - SECTION

DISCIPLINE PROJECT STAGE

ARCHITECTURAL

WORK DESCRIPTION - SUB DIVISION

TENDER WORKING DRAWINGS

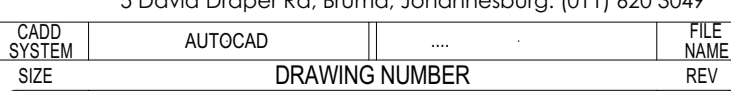
DRAWING DESCRIPTION

GROUND FLOOR PLAN

Net EMIS No.	ITEM No.
DESIGN	TDM AKHA DRAWN
SCALE	1:100 AKHA CHECKED

DATE	RESPONSIBLE PROFESSIONAL NAME	SIGNATURE	PR NUMBER
2018/05/02			

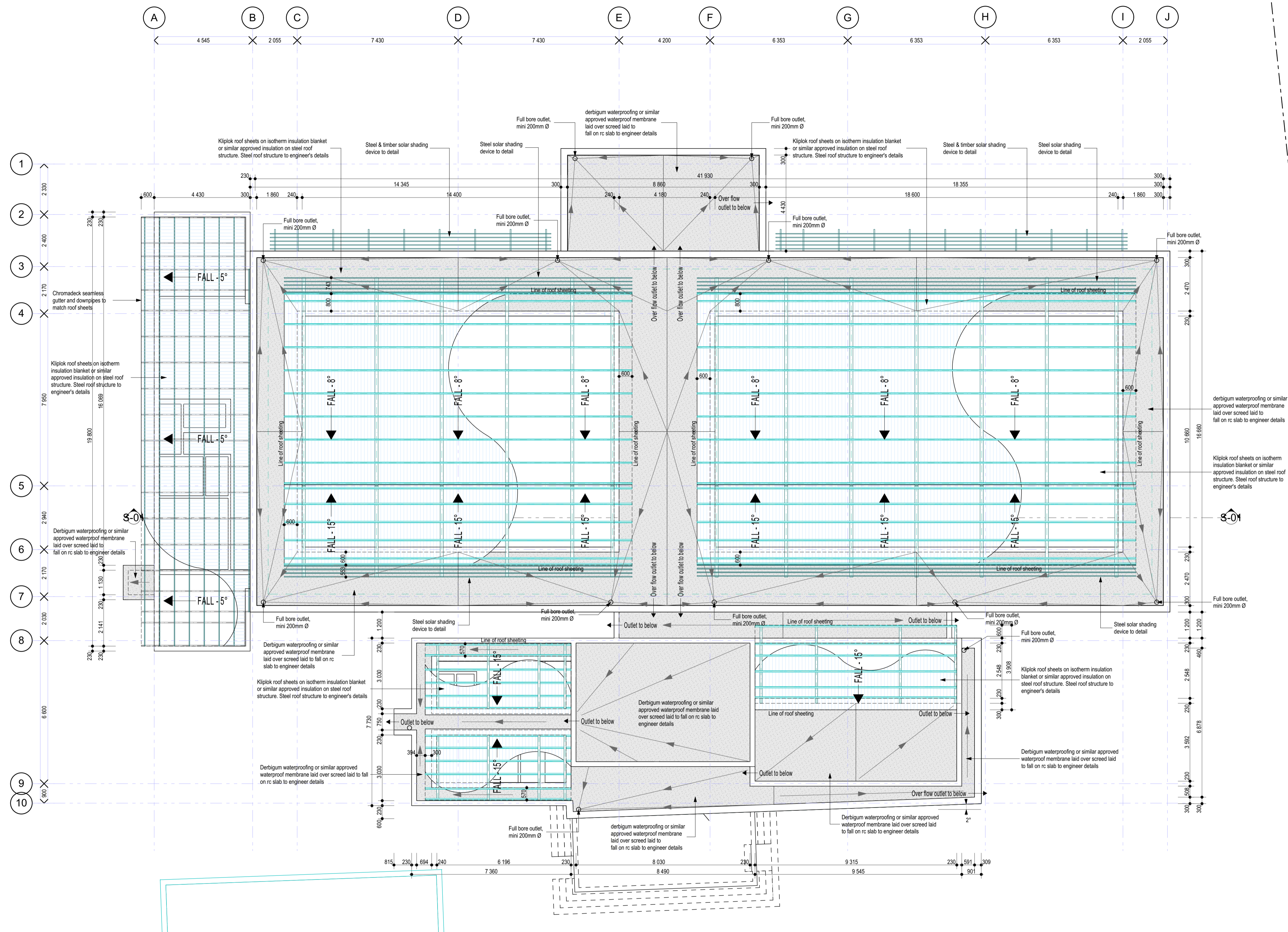
DRAWING CO-ORDINATED		
----------------------	--	--



5 David Draper Rd. Bruma, Johannesburg, (011) 620 3049

CAAD SYSTEM	AUTOCAD	FILE NAME
SIZE	DRAWING NUMBER	REV
A1	AA-1801/LIB/02	B

FLOOR PLAN
1:100



ROOF PLAN
1:100

NOTES:

- 1) Workmanship to comply with Standard Specification of materials and methods to be used - SABS 0400
- 2) Light Switch in Disabled toilet to be at 1200mm above FFL
- 3) If Step over 900mm Build in Balustrade
- 4) Gully positions to be determined as per site prescribed overall drainage design
- 5) 2 x coats sealant on all exposed trusses (sand off all SABS & other markings)
- 6) 50mm mineral wool insulation to be installed where there are ceilings. Bubble plastic insulation with foil backing to be installed with wire supports in all areas that do not have ceilings
- 7) West Facing Facades to have standardised aluminium louvers from below eaves to drop of 1200mm
- 8) Trusses to be designed in accordance with SABS0400 & approved by Project Engineers

2018/04/11	A	ISSUED FOR INFORMATION
2018/05/02	B	DRAWINGS UPDATED

DATE	REV. No.	DESCRIPTION
REVISIONS		
SIZE ON ORIGINAL DRAWING 100 mm		



FETAKGOMO-GREATER TUBATSE LOCAL MUNICIPALITY
PO BOX 206
Burgersfort
1150
Tel: (013) 265 8600 Fax: (013) 265 1975

INSTITUTION
FETAKGOMO TUBATSE MUNICIPALITY

SERVICE
PRAKTISEER COMMUNITY LIBRARY

CONTRACT - SECTION
DISCIPLINE PROJECT STAGE

ARCHITECTURAL
WORK DESCRIPTION - SUB DIVISION
TENDER WORKING DRAWINGS

DRAWING DESCRIPTION
ROOF PLAN

Net EMIS No.		ITEM No.	
DESIGN	TDM	AKHA	DRAWN
SCALE	1:100	AKHA	CHECKED

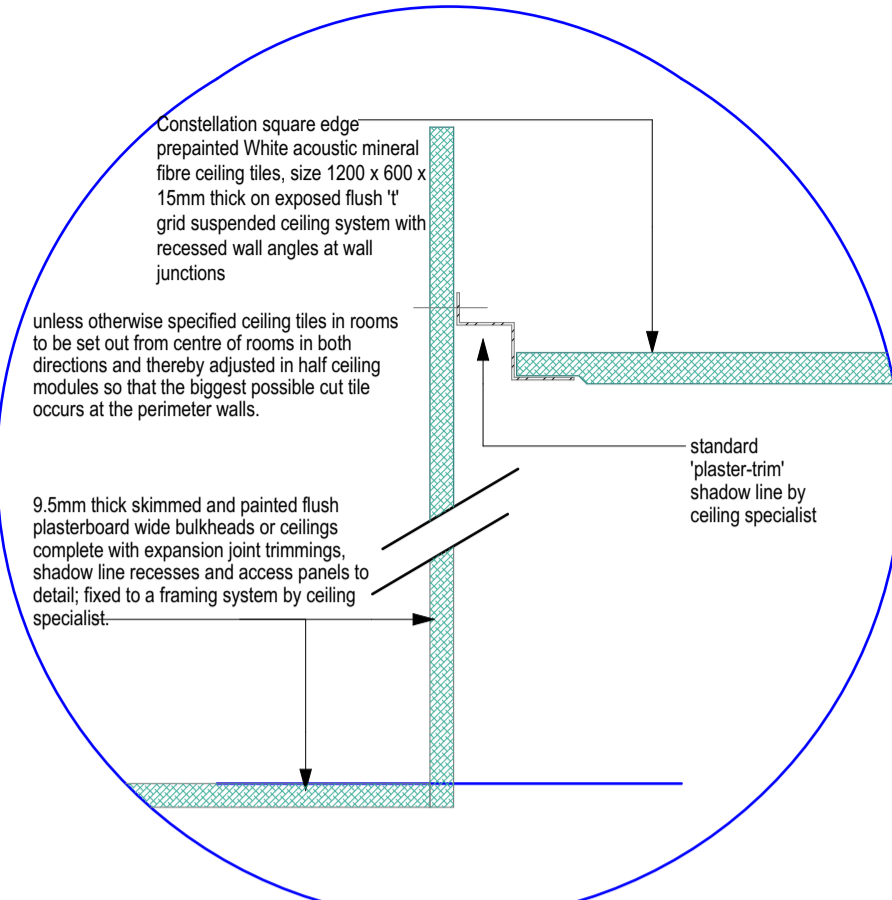
DATE	NAME	SIGNATURE	PR NUMBER
2018/05/02			

DRAWING CO-ORDINATED	

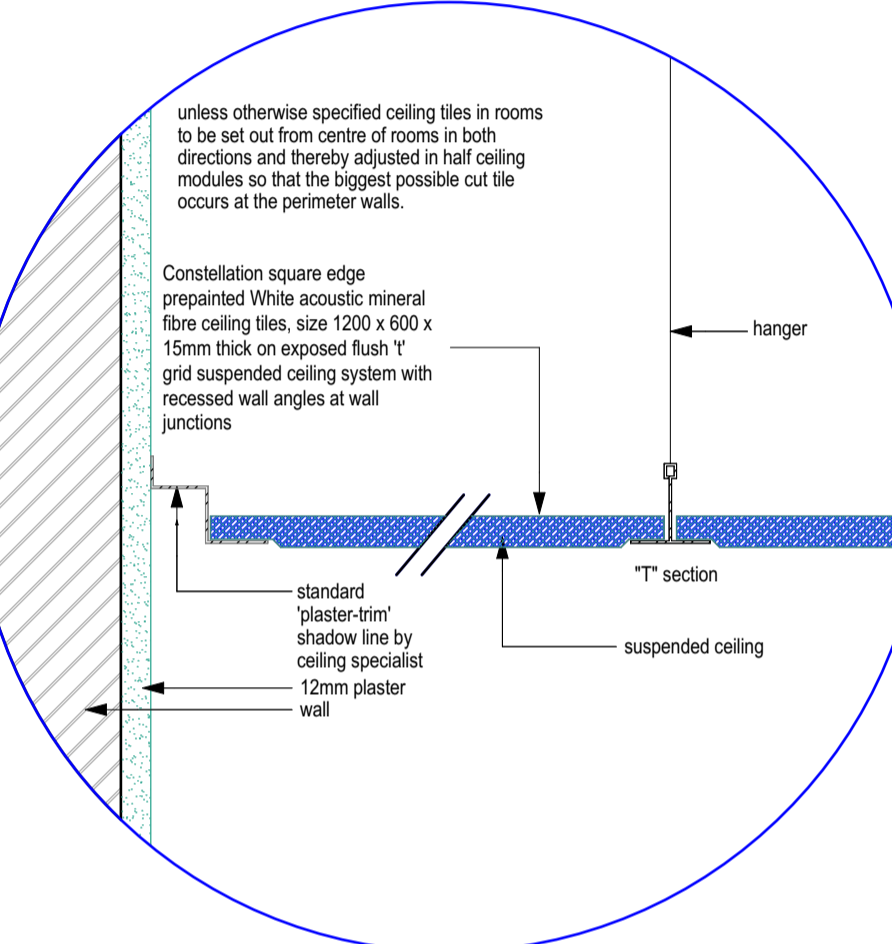


5 David Draper Rd. Bruma, Johannesburg, [011] 620 3049

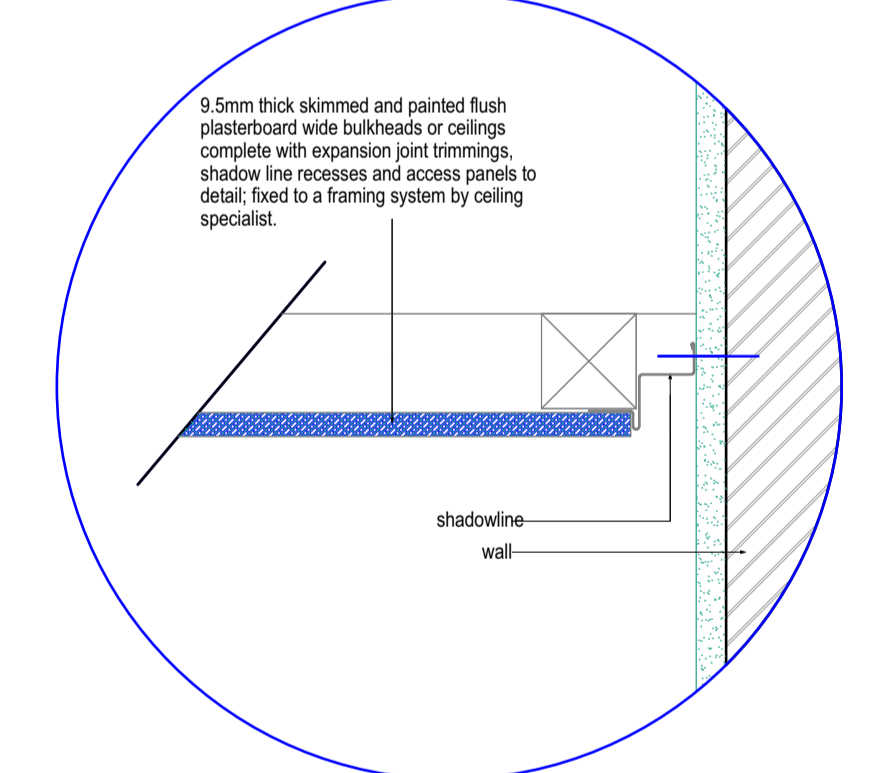
CADD SYSTEM	AUTOCAD	FILE NAME	
SIZE		DRAWING NUMBER	
A1		AA-1801/LIB/03	B



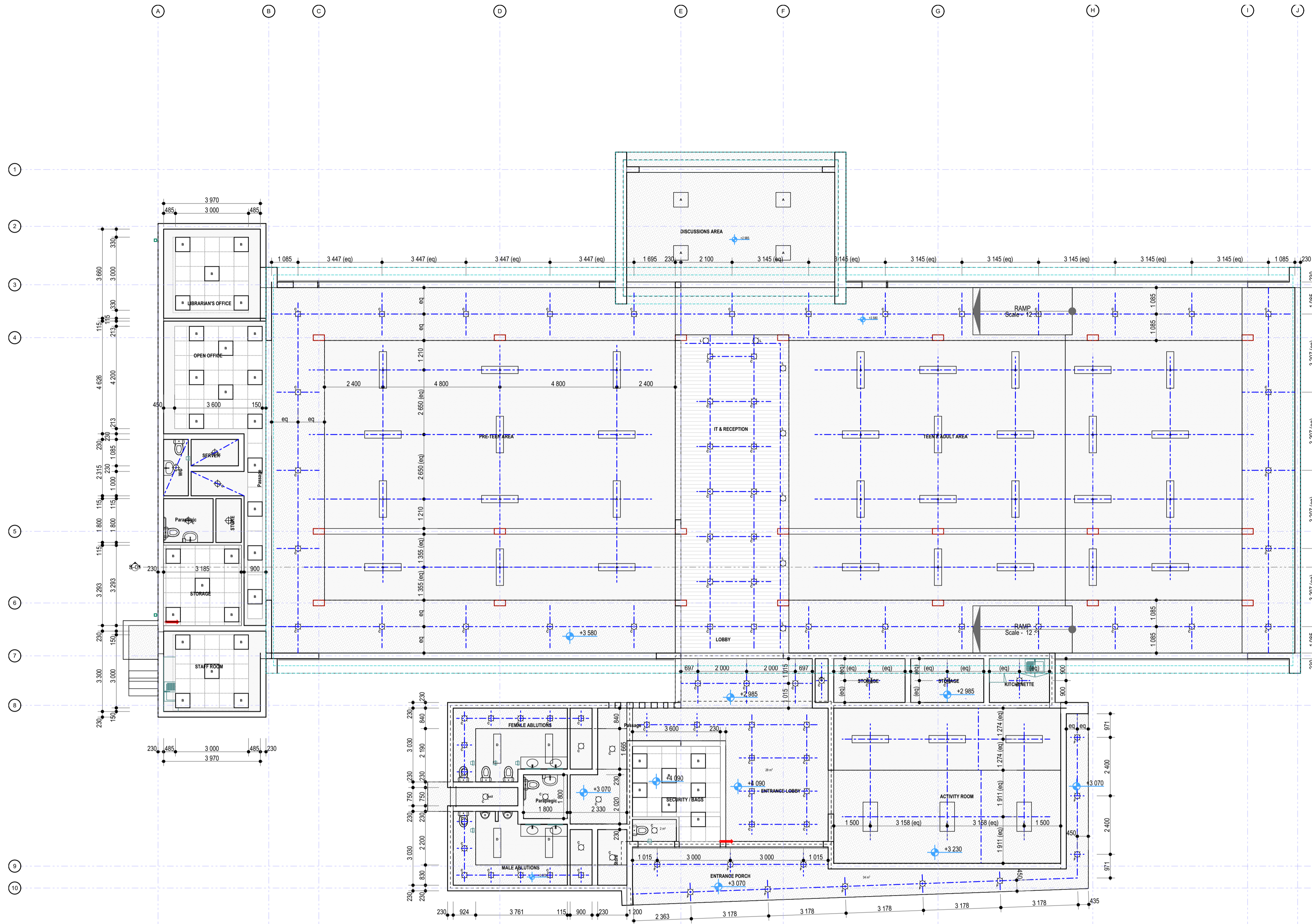
SHADOWLINE DETAIL AT BULKHEAD JUNCTIONS- ACOUSTIC TILES
SCALE: 1:10
DETAIL-1



SHADOWLINE DETAIL AT WALL JUNCTIONS- ACOUSTIC TILES
SCALE: 1:10
DETAIL-2



SHADOWLINE DETAIL AT WALL JUNCTIONS- SKIMMED CEILING
SCALE: 1:10
DETAIL-3



CEILING LAYOUT PLAN
1:100

CEILING LEGEND	
	ACOUSTIC CEILING TILES
	SKIMMED GYPSUM BOARD CEILING
	CONCRETE SOFFITS
	CEILING TRAP DOOR

Constellation square edge pre-painted White acoustic mineral fibre ceiling tiles, size 1200 x 600 x 15mm thick, laid on CKM T38/15 15 x 38mm pre-painted white exposed grid system comprising main tees at 1200mm centres and CKM T38/15 15 x 38mm cross tees at 600mm centres at right angles to main tees. Main tees suspended by means of 2.5mm diameter pre-straightened galvanised wires at 1200mm centres using wire. Ceiling perimeter to be finished with CKM W20/20 shadowline shadowline perimeter trim, fixed at 450mm centres using wall anchors. Ceilings to be installed by an approved specialist and in accordance with the manufacturer's recommendations.

Flush plaster gypsum or Magna Board ceiling fixed to concealed suspended tee system skimmed and prepared to receive 2 coats quality PVA paint Cornice Standard Donn plaster trim shadow line cornice between and perimeter walls.

Concrete soffits to be painted, ripple paint texture-Soffits finished with one coat plaster and painted with one coat alkali resistant primer, one universal undercoat and two coats Plascon Professional Superior Low Sheen (PEM 1100) or Dulux Luxurious Silk (D22) acrylic paint. Paint sequence to paint manufacturer recommendations.

600x600 CEILING TRAP DOOR: as per roof plan. Finish with 1 universal undercoat and two coats eggshell enamel paint to comply with SABS 630 type 2 or equivalent standard. Colour- white.

- NOTES:
- 1) Workmanship to comply with Standard Specification of materials and methods to be used - SABS 0400
 - 2) Light Switch in Disabled toilet to be at 1200mm above FFL
 - 3) If Step over 900mm Build in Balustrade
 - 4) Gully positions to be determined as per site prescribed overall drainage design
 - 5) 2 x coats sealant on all exposed trusses (sand off all SABS & other markings)
 - 6) 50mm mineral wool insulation to be installed where there are ceilings. Bubble plastic insulation with foil backing to be installed with wire supports in all areas that do not have ceilings
 - 7) West Facing Facades to have standardised aluminium louvers from below eaves to drop of 1200mm
 - 8) Trusses to be designed in accordance with SABS0400 & approved by Project Engineers

DATE	REV. No.	DESCRIPTION
2018/04/23	A	ISSUED FOR INFORMATION
2018/05/02	B	DRAWINGS UPDATED

REVISIONS
SIZE ON ORIGINAL DRAWING 100 mm

FETAKGOMO-GREATER TUBATSE LOCAL MUNICIPALITY
PO BOX 206
Burgersfort
1150
Tel: (013) 265 8600 Fax: (013) 265 1975

INSTITUTION
FETAKGOMO TUBATSE MUNICIPALITY

SERVICE
PRAKTISEER COMMUNITY LIBRARY

CONTRACT - SECTION

DISCIPLINE PROJECT STAGE
ARCHITECTURAL

WORK DESCRIPTION - SUB DIVISION
TENDER WORKING DRAWINGS

DRAWING DESCRIPTION
CEILING LAYOUT

DESIGN	TDM	AKHA	DRAWN
SCALE	1:10, 1:100	AKHA	CHECKED

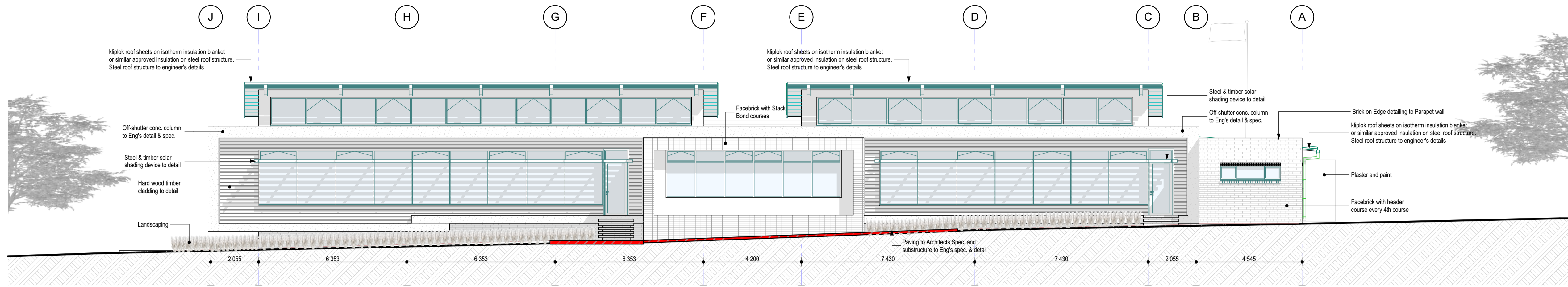
DATE	NAME	SIGNATURE	PR NUMBER
2018/05/02			

DRAWING CO-ORDINATED

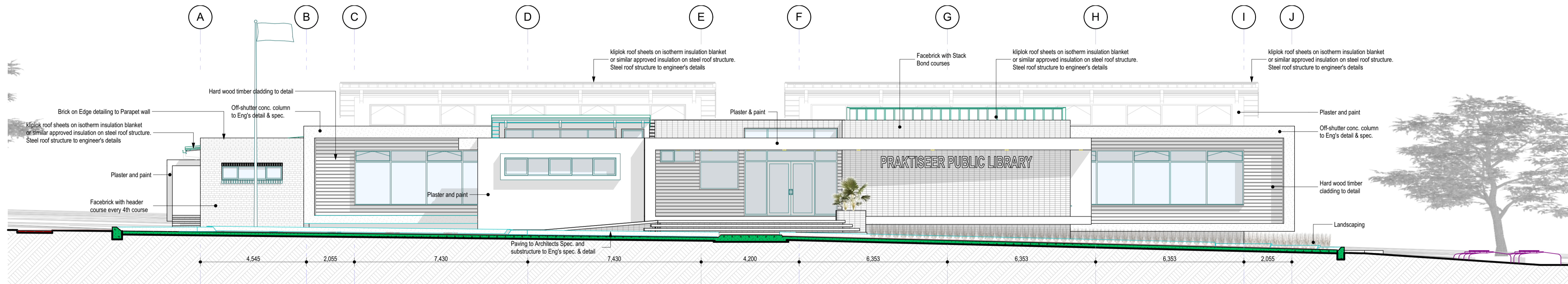
5 David Draper Rd. Bruma, Johannesburg, [011] 620 3049

CAOD SYSTEM	AUTOCAD	FILE NAME
SIZE	DRAWING NUMBER	REV

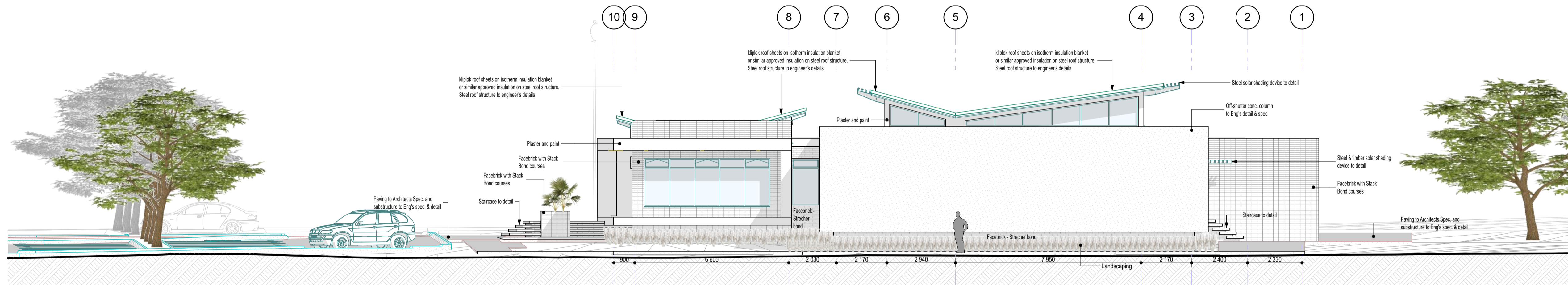
A1 AA-1801/LIB/04 B



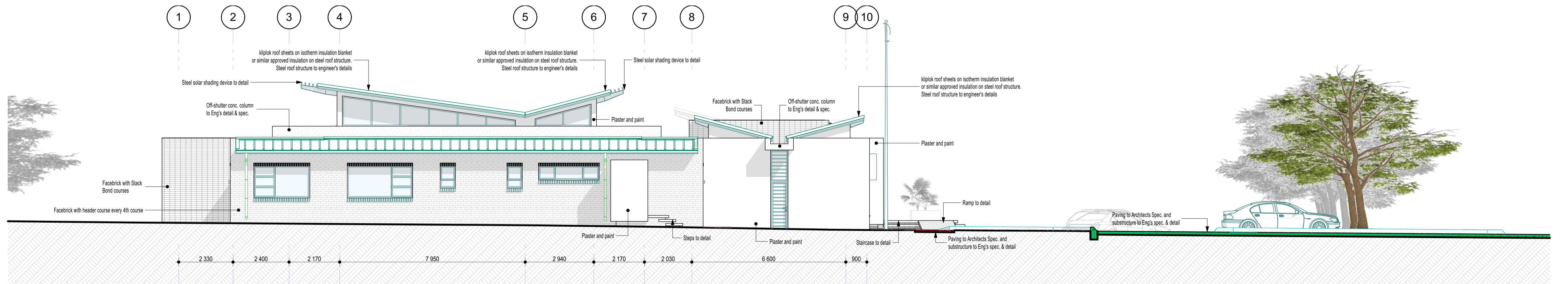
NORTH ELEVATION
1:100



SOUTH ELEVATION
1:100



EAST ELEVATION
1:100



WEST ELEVATION
1:100

NOTES:

- 1) Workmanship to comply with Standard Specification of materials and methods to be used - SABS 0400
- 2) Light Switch in Disabled toilet to be at 1200mm above FFL
- 3) If Step over 900mm Build in Balustrade
- 4) Gully positions to be determined as per site prescribed overall drainage design
- 5) 2 x coats sealant on all exposed trusses (sand off all SABS & other markings)
- 6) 50mm mineral wool insulation to be installed where there are ceilings. Bubble plastic insulation with foil backing to be installed with wire supports in all areas that do not have ceilings
- 7) West Facing Facades to have standardised aluminium louvres from below eaves to drop of 1200mm
- 8) Trusses to be designed in accordance with SABS0400 & approved by Project Engineers

201804/11	A	ISSUED FOR INFORMATION
201805/02	B	DRAWINGS UPDATED

DATE	REV. No.	DESCRIPTION
REVISIONS		
SIZE ON ORIGINAL DRAWING 100 mm		



FETAKGOMO-GREATER TUBATSE LOCAL MUNICIPALITY
PO BOX 208
Burgersfort
1150
Tel: (013) 265 8600 Fax: (013) 265 1975

INSTITUTION
FETAKGOMO TUBATSE MUNICIPALITY

SERVICE
PRAKTISEER COMMUNITY LIBRARY

CONTRACT - SECTION
DISCIPLINE PROJECT STAGE

ARCHITECTURAL
WORK DESCRIPTION - SUB DIVISION
TENDER WORKING DRAWINGS

DRAWING DESCRIPTION
ELEVATIONS

Nat EMIS No.	TDM	AKHA	ITEM No.
DESIGN	1:100	AKHA	DRAWN
SCALE			CHECKED

DATE	NAME	SIGNATURE	PR NUMBER
2018/05/02			

DRAWING CO-ORDINATED			
----------------------	--	--	--

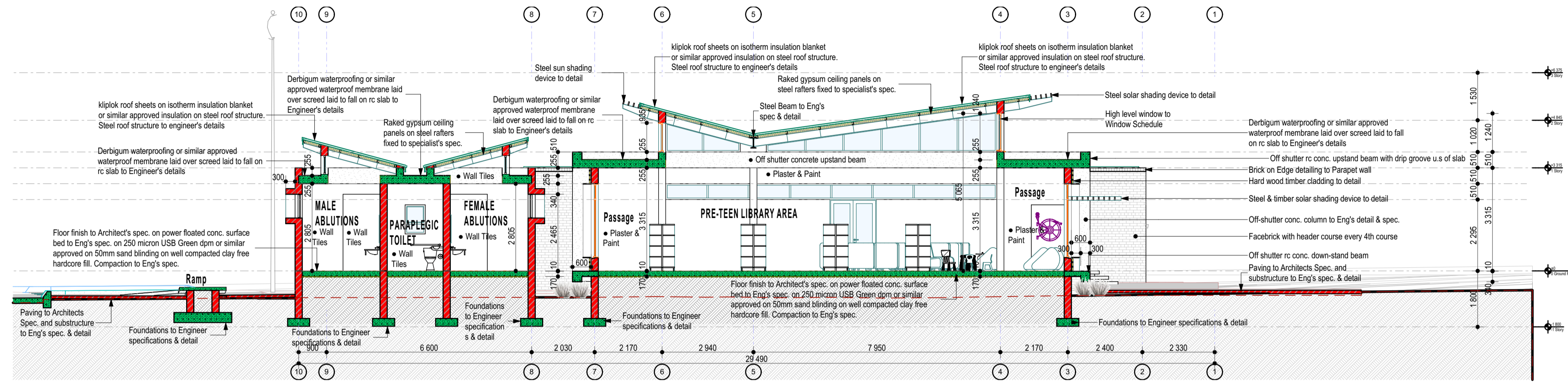


5 David Draper Rd. Bruma, Johannesburg, (011) 420 3049

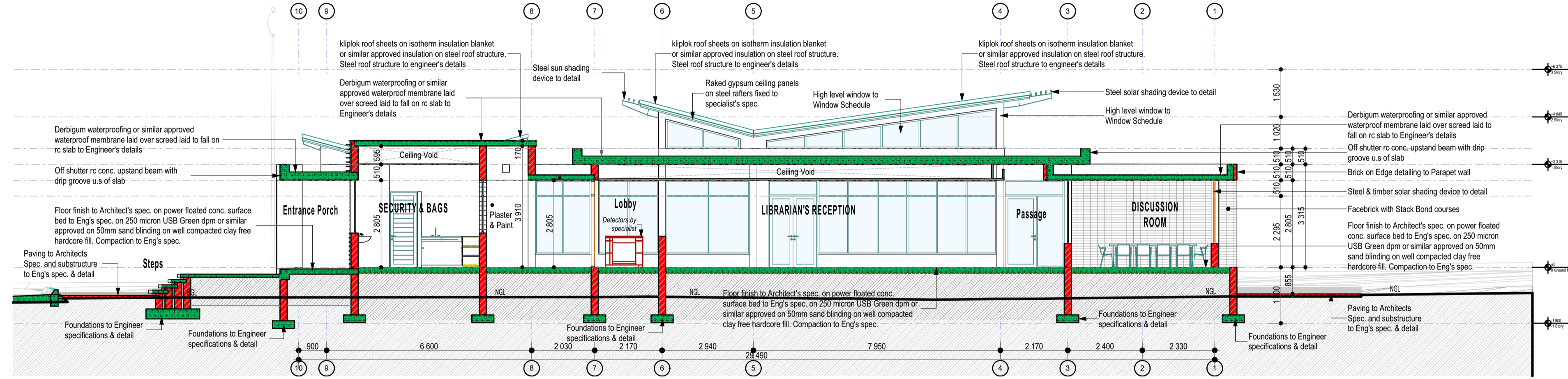
CADD SYSTEM	AUTOCAD	FILE NAME
SIZE	DRAWING NUMBER	REV
A1	AA-1801/LIB/05	B

NOTES:

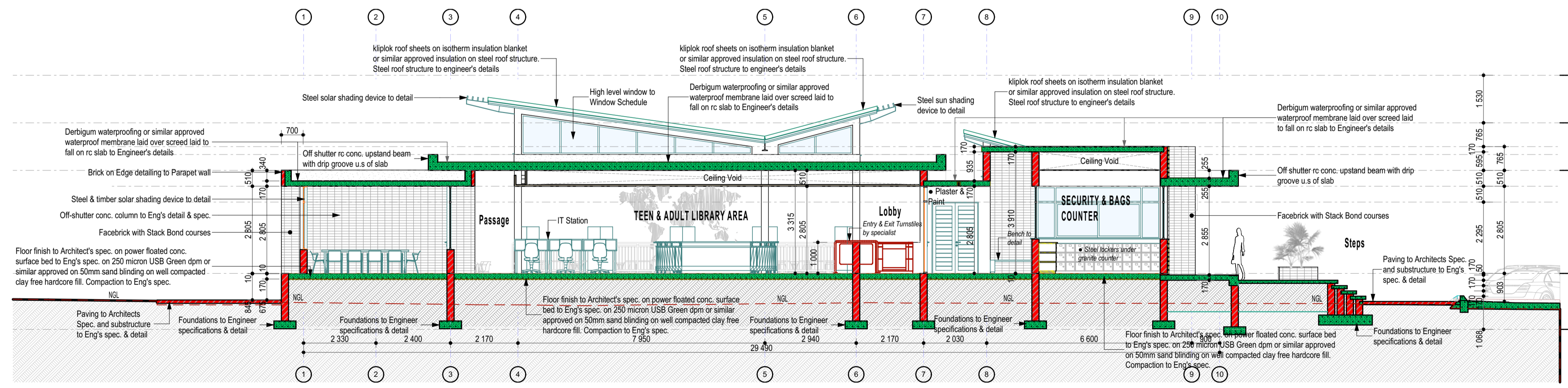
- 1) Workmanship to comply with Standard Specification of materials and methods to be used - SABS 0400
- 2) Light Switch in Disabled toilet to be at 1200mm above FFL
- 3) If Step over 900mm Build in Balustrade
- 4) Gully positions to be determined as per site prescribed overall drainage design
- 5) 2 x coats sealant on all exposed trusses (sand off all SABS & other markings)
- 6) 50mm mineral wool insulation to be installed where there are ceilings. Bubble plastic insulation with foil backing to be installed with wire supports in all areas that do not have ceilings
- 7) West Facing Facades to have standardised aluminium louvers from below eaves to drop of 1200mm
- 8) Trusses to be designed in accordance with SABS0400 & approved by Project Engineers



SECTION A-A
1:100



SECTION B-B
1:100



SECTION C-C
1:100

DATE	REV. No.	DESCRIPTION
2018/04/11	A	ISSUED FOR INFORMATION
2018/05/02	B	DRAWINGS UPDATED

REVISIONS

SIZE ON ORIGINAL DRAWING 100 mm



FETAKGOMO-GREATER TUBATSE LOCAL MUNICIPALITY
PO BOX 206
Burgersfort
1150
Tel: (013) 265 8600 Fax: (013) 265 1975

INSTITUTION
FETAKGOMO TUBATSE MUNICIPALITY

SERVICE
PRAKTISEER COMMUNITY LIBRARY

CONTRACT - SECTION

DISCIPLINE PROJECT STAGE
ARCHITECTURAL

WORK DESCRIPTION - SUB DIVISION
TENDER WORKING DRAWINGS

DRAWING DESCRIPTION
SECTIONS 02

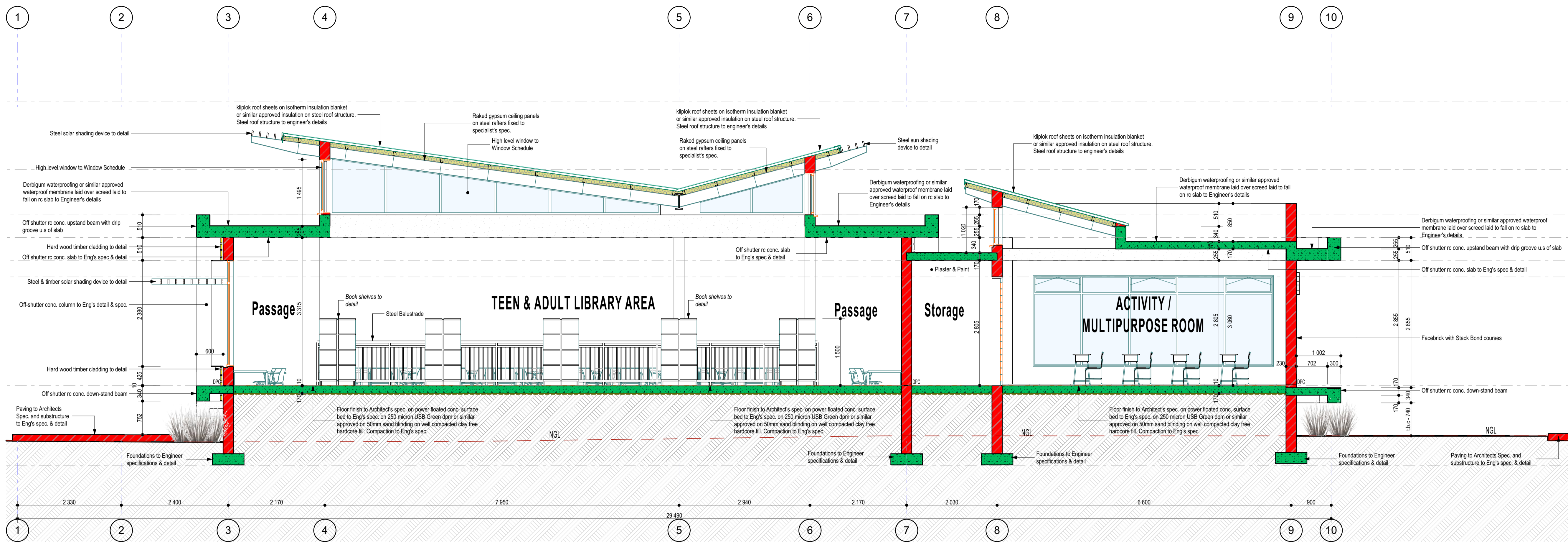
DATE	NAME	SIGNATURE	PR NUMBER
2018/05/02			

DRAWING CO-ORDINATED

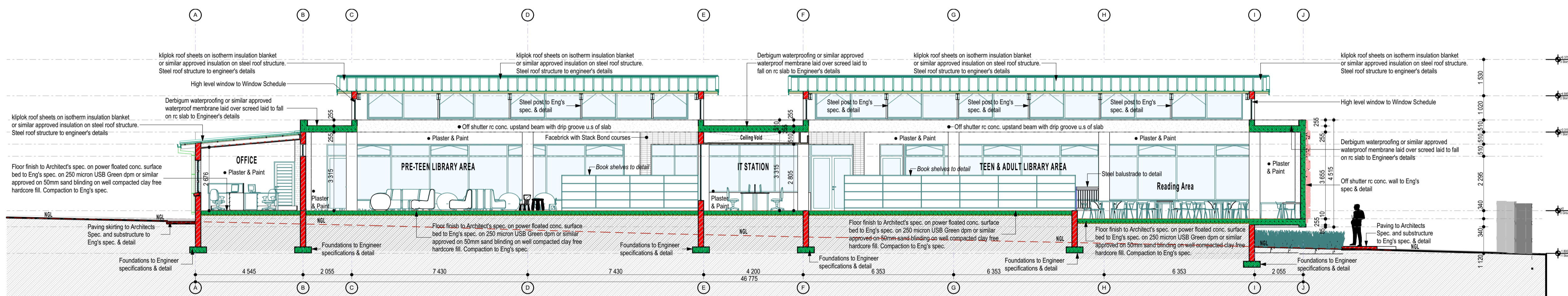


5 David Draper Rd. Bruma, Johannesburg, [011] 620 3049

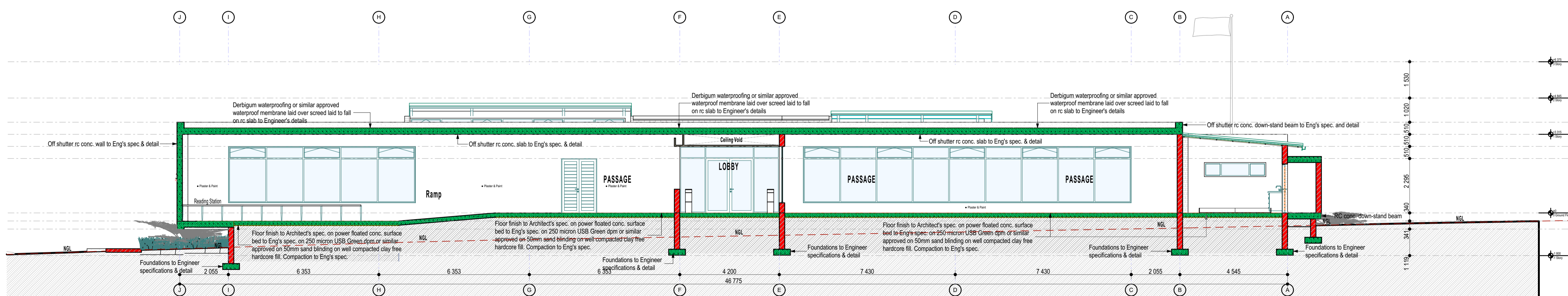
CAAD SYSTEM	AUTOCAD	FILE NAME
SCALE	1:100	REV
A1	AA-1801/LIB/06	B



SECTION D-D
1:50



SECTION E-E
1:100



SECTION F-F
1:100

NOTES:

- 1) Workmanship to comply with Standard Specification of materials and methods to be used - SABS 0400
- 2) Light Switch in Disabled toilet to be at 1200mm above FFL
- 3) If Step over 900mm Build in Balustrade
- 4) Gully positions to be determined as per site prescribed overall drainage design
- 5) 2 x coats sealant on all exposed trusses (sand off all SABS & other markings)
- 6) 50mm mineral wool insulation to be installed where there are ceilings. Bubble plastic insulation with foil backing to be installed with wire supports in all areas that do not have ceilings
- 7) West Facing Facades to have standardised aluminium louvres from below eaves to drop of 1200mm
- 8) Trusses to be designed in accordance with SABS0400 & approved by Project Engineers

2018/04/11	A	ISSUED FOR INFORMATION
2018/05/02	B	DRAWINGS UPDATED

DATE	REV. No.	DESCRIPTION
REVISIONS		
SIZE ON ORIGINAL DRAWING 100 mm		


FETAKGOMO-GREATER TUBATSE LOCAL MUNICIPALITY
 PO BOX 206
 Burgersfort
 1150
 Tel: (013) 265 8600 Fax: (013) 265 1975

FETAKGOMO TUBATSE MUNICIPALITY

SERVICE
PRAKTISEER COMMUNITY LIBRARY

CONTRACT - SECTION
DISCIPLINE PROJECT STAGE

ARCHITECTURAL

WORK DESCRIPTION - SUB DIVISION
TENDER WORKING DRAWINGS

DRAWING DESCRIPTION
SECTIONS 02

Net EMIS No.	TDM	AKHA	ITEM No.
DESIGN	1:50, 1:100	AKHA	DRAWN
SCALE			CHECKED

DATE	RESPONSIBLE PROFESSIONAL NAME	SIGNATURE	PR NUMBER
2018/05/02			

CAAD SYSTEM	AUTOCAD	FILE NAME
SIZE		REV
A1	AA-1801/LIB/07	B

5 David Draper Rd. Bruma, Johannesburg, (011) 620 3049

WINDOW SCHEDULE													
WINDOW No.	W01	W02	W03	W04	W05	W06	W07	W08	W09	W10	W11	W12	W13
ELEVATION (from outside)													
FLOOR PLAN													
QUANTITY	9	1	3	1	1	1	1	2	1	1	1	1	1
W x H Size	650x935	1 500x535	2 600x595	1 200x2 040	1 685x1 700	1 694x1 700	2 400x1 360	4 776x765	2 800x1 360	1 800x2 380	1 940x2 380	1 995x2 380	10 660x510
LOCATION	Male, Female, Staff and Paralegic toilets	Security Toilet	Staff Room, Store Room, Librarian's Office	Activity Room's Kitchen	Security / Bags - Entrance Lobby	Security / Bags - Entrance Lobby	Librarian's Office	Female and Male Ablutions	open Office	Entrance Lobby	Lobby	Discussion Area	Staff Area Passage / Pre-teen Area
WINDOW DESCRIPTION	Anodised aluminium window frame non opening section with clip on glazing beads with neoprene seals. Plugged to brickwork or concrete to SABS Standards	Anodised aluminium window frame non opening section with clip on glazing beads with neoprene seals. Plugged to brickwork or concrete to SABS Standards	Anodised aluminium window frame non opening section with clip on glazing beads with neoprene seals. Plugged to brickwork or concrete to SABS Standards	Anodised aluminium window frame non opening section with clip on glazing beads with neoprene seals. Plugged to brickwork or concrete to SABS Standards	Anodised aluminium window frame non opening section with clip on glazing beads with neoprene seals. Plugged to brickwork or concrete to SABS Standards	Anodised aluminium window frame non opening section with clip on glazing beads with neoprene seals. Plugged to brickwork or concrete to SABS Standards	Anodised aluminium window frame non opening section with clip on glazing beads with neoprene seals. Plugged to brickwork or concrete to SABS Standards	Anodised aluminium window frame non opening section with clip on glazing beads with neoprene seals. Plugged to brickwork or concrete to SABS Standards	Anodised aluminium window frame non opening section with clip on glazing beads with neoprene seals. Plugged to brickwork or concrete to SABS Standards	Anodised aluminium window frame non opening section with clip on glazing beads with neoprene seals. Plugged to brickwork or concrete to SABS Standards	Anodised aluminium window frame non opening section with clip on glazing beads with neoprene seals. Plugged to brickwork or concrete to SABS Standards	Anodised aluminium window frame non opening section with clip on glazing beads with neoprene seals. Plugged to brickwork or concrete to SABS Standards	Bronze anodised aluminium window frame non opening section with clip on glazing beads with neoprene seals. Plugged to brickwork or concrete to SABS Standards
FINISH	Bronze anodised or similar dark finish	Bronze anodised or similar dark finish	Bronze anodised or similar dark finish	Bronze anodised or similar dark finish	Bronze anodised or similar dark finish	Bronze anodised or similar dark finish	Bronze anodised or similar dark finish	Bronze anodised or similar dark finish	Bronze anodised or similar dark finish	Bronze anodised or similar dark finish	Bronze anodised or similar dark finish	Bronze anodised or similar dark finish	Bronze anodised or similar dark finish
GLAZING	Top-hung with 6mm Safety glass - clear	Top-hung with 6mm Safety glass - clear	Top-hung with 6mm Safety glass - clear	Opening section Pivoted with 6mm Safety glass - clear	All fixed, 6mm Safety glass - clear	All fixed, 6mm Safety glass - clear	Top-hung with 6mm Safety glass - clear	Top-hung with 6mm Safety glass - clear	Top-hung with 6mm Safety glass - clear	All fixed, 6mm Safety glass - clear	All fixed, 6mm Safety glass - clear	All fixed, 6mm Safety glass - clear	All fixed, 6mm Safety glass - clear
IRONMONGERY	Standard as per manufacturer	Standard as per manufacturer	Standard as per manufacturer	Standard as per manufacturer	Standard as per manufacturer	Standard as per manufacturer	Standard as per manufacturer	Standard as per manufacturer	Standard as per manufacturer	Standard as per manufacturer	Standard as per manufacturer	Standard as per manufacturer	Standard as per manufacturer
AREA (m2)	0,61	0,80	1,55	2,45	2,86	3,13	3,26	3,65	3,81	4,28	4,62	4,75	5,44
HIEGHT ABOVE FFL	2 125	2 805	2 125	2 465	2 805	2 805	2 125	2 465	2 125	2 805	2 805	2 805	2 805

WINDOW SCHEDULE 01
1:1

WINDOW SCHEDULE								
WINDOW No.	W14	W15	W16	W17	W18	W19	W20	W21
ELEVATION (from outside)								
FLOOR PLAN								
QUANTITY	1	1	1	1	1	1	1	1
W x H Size	2 710x2 380	3 980x1 700	4 515x2 040	5 400x2 040	5 760x2 380	7 520x2 040	7 900x2 380	11 515x2 380
LOCATION	Librarian Station	Security / Bags - Entrance Lobby	Discussion Area	Activity Room	IT & Reception	Discussion Room	Teen & Adult Library	Pre-teen Library Area
WINDOW DESCRIPTION	Bronze anodised aluminium window frame non opening section with clip on glazing beads with neoprene seals. Plugged to brickwork or concrete to SABS Standards	Bronze anodised aluminium window frame non opening section with clip on glazing beads with neoprene seals. Plugged to brickwork or concrete to SABS Standards	Bronze anodised aluminium window frame non opening section with clip on glazing beads with neoprene seals. Plugged to brickwork or concrete to SABS Standards	Anodised aluminium window frame non opening section with clip on glazing beads with neoprene seals. Plugged to brickwork or concrete to SABS Standards	Anodised aluminium window frame non opening section with clip on glazing beads with neoprene seals. Plugged to brickwork or concrete to SABS Standards	Anodised aluminium window frame non opening section with clip on glazing beads with neoprene seals. Plugged to brickwork or concrete to SABS Standards	Anodised aluminium window frame non opening section with clip on glazing beads with neoprene seals. Plugged to brickwork or concrete to SABS Standards	Anodised aluminium window frame non opening section with clip on glazing beads with neoprene seals. Plugged to brickwork or concrete to SABS Standards
FINISH	Bronze anodised or similar dark finish	Bronze anodised or similar dark finish	Bronze anodised or similar dark finish	Bronze anodised or similar dark finish	Bronze anodised or similar dark finish	Bronze anodised or similar dark finish	Bronze anodised or similar dark finish	Bronze anodised or similar dark finish
GLAZING	All fixed, 6mm Safety glass - clear	Opening section sliding, all 6mm Safety glass - clear	All fixed, 6mm Safety glass - clear	Opening section Pivoted with 6mm Safety glass - clear	All fixed, 6mm Safety glass - clear	Opening section Pivoted with 6mm Safety glass - clear	Opening section Pivoted with 6mm Safety glass - clear	Opening section Pivoted with 6mm Safety glass - clear
IRONMONGERY	Standard as per manufacturer	Standard as per manufacturer	Standard as per manufacturer	Standard as per manufacturer	Standard as per manufacturer	Standard as per manufacturer	Standard as per manufacturer	Standard as per manufacturer
AREA (m2)	6,45	7,06	9,21	11,02	13,71	15,34	18,80	27,41
HIEGHT ABOVE FFL	2 805	2 805	2 805	2 465	2 805	2 805	2 805	2 805

WINDOW SCHEDULE 02
1:1

WINDOW SCHEDULE					
WINDOW No.	W22	W23	WG01	WG02	WG03
ELEVATION (from outside)					
FLOOR PLAN					
QUANTITY	1	1	1	2	1
W x H Size	13 850x2 380	14 775x2 380	650x935	2 080x1 190	2 700x1 190
LOCATION	Pre-teen Library Area	Teen & Adult Library Area	Gate House, Toilet	Gate House	Gate House
WINDOW DESCRIPTION	Anodised aluminium window frame non opening section with clip on glazing beads with neoprene seals. Plugged to brickwork or concrete to SABS Standards	Anodised aluminium window frame non opening section with clip on glazing beads with neoprene seals. Plugged to brickwork or concrete to SABS Standards	Anodised aluminium window frame non opening section with clip on glazing beads with neoprene seals. Plugged to brickwork or concrete to SABS Standards	Anodised aluminium window frame non opening section with clip on glazing beads with neoprene seals. Plugged to brickwork or concrete to SABS Standards	Anodised aluminium window frame non opening section with clip on glazing beads with neoprene seals. Plugged to brickwork or concrete to SABS Standards
FINISH	Bronze anodised or similar dark finish	Bronze anodised or similar dark finish	Bronze anodised or similar dark finish	Bronze anodised or similar dark finish	Bronze anodised or similar dark finish
GLAZING	Opening section Pivoted with 6mm Safety glass - clear	Opening section Pivoted, all with 6mm Safety glass - clear	Opening section top hung, all with 6mm Safety glass - clear	Opening section top hung, all with 6mm Safety glass - clear	Opening section top hung, all with 6mm Safety glass - clear
IRONMONGERY	Standard as per manufacturer	Standard as per manufacturer	Standard as per manufacturer	Standard as per manufacturer	Standard as per manufacturer
AREA (m2)	32,96	35,16	0,61	2,65	3,57
HIEGHT ABOVE FFL	2 805	2 805	2 125	1 615	1 615

WINDOW SCHEDULE 03
1:1

NOTES:

- 1) Workmanship to comply with Standard Specification of materials and methods to be used - SABS 0400
- 2) Light Switch in Disabled toilet to be at 1200mm above FFL
- 3) If Step over 900mm Build in Balustrade
- 4) Gully positions to be determined as per site prescribed overall drainage design
- 5) 2 x coats sealant on all exposed trusses (sand off all SABS & other markings)
- 6) 50mm mineral wool insulation to be installed where there are ceilings. Bubble plastic insulation with foil backing to be installed with wire supports in all areas that do not have ceilings
- 7) West Facing Facades to have standardised aluminium louvers from below eaves to drop of 1200mm
- 8) Trusses to be designed in accordance with SABS0400 & approved by Project Engineers

DATE	REV. No.	DESCRIPTION
2018/04/23	A	ISSUED FOR INFORMATION

REVISIONS
SIZE ON ORIGINAL DRAWING 100 mm

FETAKGOMO-GREATER TUBATSE LOCAL MUNICIPALITY
PO BOX 208
Burgersfort
1150
Tel: (013) 265 8600 Fax: (013) 265 1975

FETAKGOMO TUBATSE MUNICIPALITY

SERVICE
PRAKTISEER COMMUNITY LIBRARY

CONTRACT - SECTION
DISCIPLINE PROJECT STAGE

ARCHITECTURAL
WORK DESCRIPTION - SUB DIVISION

TENDER WORKING DRAWINGS
DRAWING DESCRIPTION

WINDOW SCHEDULE 01

DATE	NAME	SIGNATURE	PR NUMBER
2018/05/02			

DRAWING CO-ORDINATED

5 David Draper Rd. Bruma, Johannesburg, [011] 620 3049

CADD SYSTEM	AUTOCAD	FILE NAME
A1	AA-1801/LIB/08	A

WINDOW No.	WR01	WR02	WR03	WR05	WR06	WR07	WR08
ELEVATION (from outside)							
FLOOR PLAN							
QUANTITY	2	4	1	2	4	1	1
W x H Size	970x595	2400x950	4000x595	4776x595	7420x1300	9085x850	13550x935
LOCATION	Store Room, Passage	Over Pre-teen, Teen and Adult Library Areas	Entrance Lobby	Male & Female Ablutions	Over Pre-teen, Teen and Adult Library Areas	Activity Room	Over Pre-teen Library Areas
WINDOW DESCRIPTION	Anodised aluminium window frame non opening section with clip on glazing beads with neoprene seals. Plugged to brickwork or concrete to SABS Standards	Anodised aluminium window frame non opening section with clip on glazing beads with neoprene seals. Plugged to brickwork or concrete to SABS Standards	Anodised aluminium window frame non opening section with clip on glazing beads with neoprene seals. Plugged to brickwork or concrete to SABS Standards	Anodised aluminium window frame non opening section with clip on glazing beads with neoprene seals. Plugged to brickwork or concrete to SABS Standards	Anodised aluminium window frame non opening section with clip on glazing beads with neoprene seals. Plugged to brickwork or concrete to SABS Standards	Anodised aluminium window frame non opening section with clip on glazing beads with neoprene seals. Plugged to brickwork or concrete to SABS Standards	Anodised aluminium window frame non opening section with clip on glazing beads with neoprene seals. Plugged to brickwork or concrete to SABS Standards
FINISH	Bronze anodised or similar dark finish	Bronze anodised or similar dark finish	Bronze anodised or similar dark finish	Bronze anodised or similar dark finish	Bronze anodised or similar dark finish	Bronze anodised or similar dark finish	Bronze anodised or similar dark finish
GLAZING	Opening section Pivoted, all with 6mm Safety glass - clear	All fixed, 6mm Safety glass - clear	All fixed, 6mm Safety glass - clear	All fixed, 6mm Safety glass - clear	All fixed, 6mm Safety glass - clear	Opening section Pivoted, all with 6mm Safety glass - clear	Opening section Pivoted, all with 6mm Safety glass - clear
IRONMONGERY	Standard as per manufacturer	Standard as per manufacturer	Standard as per manufacturer	Standard as per manufacturer	Standard as per manufacturer	Standard as per manufacturer	Standard as per manufacturer
AREA (m2)	0,58	2,28	2,38	2,84	9,65	7,72	12,67

WINDOW SCHEDULE 04
1:1

WINDOW No.	WR09	WR10	WR11
ELEVATION (from outside)			
FLOOR PLAN			
QUANTITY	1	1	1
W x H Size	13 550x1 200	18 050x935	18 050x1 200
LOCATION	Over Pre-teen Library Areas	Over Teen and Adult Library Area	Over Teen and Adult Library Area
WINDOW DESCRIPTION	Anodised aluminium window frame non opening section with clip on glazing beads with neoprene seals. Plugged to brickwork or concrete to SABS Standards	Anodised aluminium window frame non opening section with clip on glazing beads with neoprene seals. Plugged to brickwork or concrete to SABS Standards	Anodised aluminium window frame non opening section with clip on glazing beads with neoprene seals. Plugged to brickwork or concrete to SABS Standards
FINISH	Bronze anodised or similar dark finish	Bronze anodised or similar dark finish	Bronze anodised or similar dark finish
GLAZING	Opening section Pivoted, all with 6mm Safety glass - clear	Opening section Pivoted, all with 6mm Safety glass - clear	Opening section Pivoted, all with 6mm Safety glass - clear
IRONMONGERY	Standard as per manufacturer	Standard as per manufacturer	Standard as per manufacturer
AREA (m2)	16,26	16,88	21,66


WINDOW SCHEDULE 05
1:1

NOTES:

- 1) Workmanship to comply with Standard Specification of materials and methods to be used - SABS 0400
- 2) Light Switch in Disabled toilet to be at 1200mm above FFL
- 3) If Step over 900mm Build in Balustrade
- 4) Gully positions to be determined as per site prescribed overall drainage design
- 5) 2 x coats sealant on all exposed trusses (sand off all SABS & other markings)
- 6) 50mm mineral wool insulation to be installed where there are ceilings. Bubble plastic insulation with foil backing to be installed with wire supports in all areas that do not have ceilings
- 7) West Facing Facades to have standardised aluminium louvres from below eaves to drop of 1200mm
- 8) Trusses to be designed in accordance with SABS0400 & approved by Project Engineers

DATE	REV. No.	DESCRIPTION
2018/04/23	A	ISSUED FOR INFORMATION

REVISIONS
SIZE ON ORIGINAL DRAWING 100 mm



FETAKGOMO-GREATER TUBATSE LOCAL MUNICIPALITY
PO BOX 208
Burgersfort
1150
Tel: (013) 265 8600 Fax: (013) 265 1975

INSTITUTION
FETAKGOMO TUBATSE MUNICIPALITY

SERVICE
PRAKTISEER COMMUNITY LIBRARY

CONTRACT - SECTION

DISCIPLINE PROJECT STAGE
ARCHITECTURAL


WORK DESCRIPTION - SUB DIVISION
TENDER WORKING DRAWINGS

DRAWING DESCRIPTION
WINDOW SCHEDULE 02

Nat EMIS No.	TDM	AKHA	ITEM No.
DESIGN	1:1	AKHA	DRAWN
SCALE			CHECKED

DATE	NAME	SIGNATURE	PR NUMBER
2018/05/02			

DRAWING CO-ORDINATED



5 David Draper Rd. Bruma, Johannesburg, [011] 620 3049

CAAD SYSTEM	AUTOCAD	FILE NAME
SIZE	DRAWING NUMBER	REV
A1	AA-1801/LIB/09	A

DOOR SCHEDULE		D01	D02	D03	D04	D05	D06	D07	D08	D09	D10	D11	D12	D13
ELEVATION (View from Side Opposite to Opening Side)														
PLAN														
QUANTITY	1	4	12	5	2	2	1	1	1	2	1	1	1	
SIZE (WxH)	750x3 485	806x2 064	877x2 064	900x2 435	1 000x2 805	1 500x2 295	1 500x2 295	1 500x2 435	1 600x2 805	1 800x2 805	1 940x2 805	4 000x2 805	4 200x2 805	
LOCATION	Duct	Male & Female Ablutions	Staff areas	Male, Female Ablutions, Store Room, Security Bag Office, and Activities Kitchenette	Fire Escape doors - Pre-teen, Teen and Adult Areas	DB, Store Room	To Staff Offices	Activity Storage	From Librarian's Station to Pre-teens Library Area	Activity Room, Discussion Room	From to Pre-teens Library Area	Main Entrance Lobby	Library Area Lobby	
FRAME	Purposed made 50mm hollow square steel tube door/gate frame to detail	Purpose made 1.2mm rebated steel frames suitable for 110mm wall	Standard 1.2mm double rebated steel frames suitable for 230mm & 110mm walls	Purpose made 1.2mm rebated steel frames suitable for 230mm wall, to accommodate door leaf	Standard aluminium frame sections	Purpose made 1.2mm rebated frames suitable for 230mm wall, to accommodate door leaf	Standard aluminium frame sections to SABS standards	Purpose made 1.2mm rebated frames suitable for 230mm wall, to accommodate door leaf	Standard aluminium frame sections to SABS standards	Standard aluminium frame sections to SABS standards	Standard aluminium frame sections to SABS standards	Standard aluminium frame sections to SABS standards	Standard aluminium frame sections to SABS standards	
FRAME FINISH	1x coat Zinc Chromate primer + 2x coats gloss enamel (exterior quality) paint	Red oxide factory coated + 2 coats gloss enamel to specification	1 x coat Zinc Chromate primer & 2 x coat approved enamel paint	1 x coat Zinc Chromate primer & 2 x coat approved enamel paint	Bronze powder coating or similar, to match windows - all to Architects Spec.	1 x coat Zinc Chromate primer & 2 x coat approved enamel paint	Bronze powder coating or similar, to match windows - all to Architects Spec.	1 x coat Zinc Chromate primer & 2 x coat approved enamel paint	Bronze powder coating or similar, to match windows - all to Architects Spec.	Bronze powder coating or similar, to match windows - all to Architects Spec.	Bronze powder coating or similar, to match windows - all to Architects Spec.	Bronze powder coating or similar, to match windows - all to Architects Spec.	Bronze powder coating or similar, to match windows - all to Architects Spec.	
DOOR PANEL	50x50mm hollow steel tube framed and braced. With spaced hardwood timber panels	1882x742x40mm solid flush panel door with hardboard both side and 2 concealed edges	40mm thick meranti framed door panel with horizontally slated infills - all meranti timber by specialist.	40mm thick meranti framed door panel with horizontally slated infills - all meranti timber by specialist.	Door hung on 3 reflex hinges with bushes.	40mm thick meranti framed door panel with horizontally slated infills - all meranti timber by specialist.	Each door hung on 3 reflex hinges with bushes on either left or right hand side.	40mm thick meranti framed door panel with horizontally slated infills - all meranti timber by specialist.	Each door hung on 3 reflex hinges with bushes on either left or right hand side.	Each door hung on 3 reflex hinges with bushes on either left or right hand side.	Door hung on 3 reflex hinges with bushes.	Each door hung on 3 reflex hinges with bushes on either left or right hand side.	Each door hung on 3 reflex hinges with bushes on either left or right hand side.	
PANEL FINISH	Timber door panels - 3x coats clear varnish and steel frame painted in enamel paint to Architects Approval	1x coat primer & 1x coat approved PVA paint	3 x coats clear varnish	3 x coats clear varnish	Bronze powder coating or similar, to match windows - all to Architects Spec.	3 x coats clear varnish	Bronze powder coating or similar, to match windows - all to Architects Spec.	3 x coats clear varnish	Bronze powder coating or similar, to match windows - all to Architects Spec.	Bronze powder coating or similar, to match windows - all to Architects Spec.	Bronze powder coating or similar, to match windows - all to Architects Spec.	Bronze powder coating or similar, to match windows - all to Architects Spec.	Bronze powder coating or similar, to match windows - all to Architects Spec.	
GLAZING	None	None	None	None	6mm toughened clear float safety glass - to SABS standards	None	6mm toughened clear float safety glass - to SABS standards	None	6mm toughened clear float safety glass - to SABS standards	6mm toughened clear float safety glass - to SABS standards	6mm toughened clear float safety glass - to SABS standards	6mm toughened clear float safety glass - to SABS standards	6mm toughened clear float safety glass - to SABS standards	
IRONMONGERY	To Ironmongery Schedule - Master	To Ironmongery Schedule - Master	To Ironmongery Schedule - Master	To Ironmongery Schedule - Master	To Ironmongery Schedule - Master	To Ironmongery Schedule - Master	To Ironmongery Schedule - Master	To Ironmongery Schedule - Master	To Ironmongery Schedule - Master	To Ironmongery Schedule - Master	To Ironmongery Schedule - Master	To Ironmongery Schedule - Master	To Ironmongery Schedule - Master	

Door Schedule
1:1

NOTES:

- 1) Workmanship to comply with Standard Specification of materials and methods to be used - SABS 0400
- 2) Light Switch in Disabled toilet to be at 1200mm above FFL
- 3) If Step over 900mm Build in Balustrade
- 4) Gully positions to be determined as per site prescribed overall drainage design
- 5) 2 x coats sealant on all exposed trusses (sand off all SABS & other markings)
- 6) 50mm mineral wool insulation to be installed where there are ceilings. Bubble plastic insulation with foil backing to be installed with wire supports in all areas that do not have ceilings
- 7) West Facing Facades to have standardised aluminium louvres from below eaves to drop of 1200mm
- 8) Trusses to be designed in accordance with SABS0400 & approved by Project Engineers

2018/04/23 A ISSUED FOR INFORMATION

DATE REV. No. DESCRIPTION

REVISIONS

SIZE ON ORIGINAL DRAWING 100 mm



FETAKGOMO-GREATER TUBATSE LOCAL MUNICIPALITY
PO BOX 206
Burgersfort
1150
Tel: (013) 265 8600 Fax: (013) 265 1975

FETAKGOMO TUBATSE MUNICIPALITY

SERVICE

PRAKTISEER COMMUNITY LIBRARY

CONTRACT - SECTION

DISCIPLINE

PROJECT STAGE

ARCHITECTURAL

WORK DESCRIPTION - SUB DIVISION

TENDER WORKING DRAWINGS

DRAWING DESCRIPTION

DOOR SCHEDULE

Nat EMIS No. DESIGN TDM AKHA DRAWN

SCALE 1:1 AKHA CHECKED

RESPONSIBLE PROFESSIONAL SIGNATURE PR NUMBER

DATE 2018/05/02

DRAWING CO-ORDINATED



5 David Draper Rd. Bruma, Johannesburg, [011] 620 3049

CADD SYSTEM AUTOCAD FILE NAME

SIZE DRAWING NUMBER REV

A1 AA-1801/LIB/10 A